

MUSASHI



MKB-88

Remote Controller



Remote Controller for PC base NLE systems

MKB-88

Remote Controller

MKB-88 is the ideal remote controller for the PC base NLE (Non-linear editing system).

The controller is equipped with functional button (assignable) and also Jog dial as standard configuration. The controller uses the standard USB and uses the keyboard emulation which let the controller to support various NLE systems.

Key Features

Similar operation as normal linear editing system

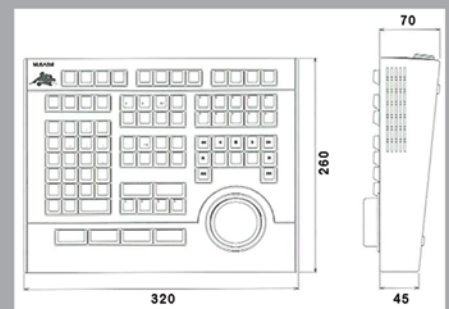
Equip with Jog / Shuttle

Equip with 88 assignable key buttons

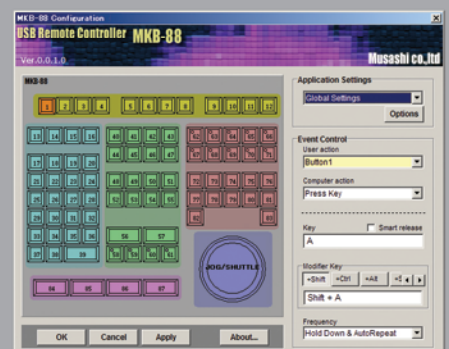
Attach with setup software (MKB-88 Setup Software)

Specifications

Interface	USB version 2.0 (Full Speed)
Power	AC100-240V 50/60Hz
Power Consumption	10W
Operational Temperature	5° - 40°C
Operational Humidity	20 - 60%
Dimension	320(W) x 260(D) x 45~70(H) mm (Exclude uneven surface)
Weight	Approx 2.5Kg
Compatible OS	Windows XP
Accessories	Power cable (2m), USB cable (1.5m) MKB-88 Setup Software User manual, Warranty card



External Dimension



MKB-88 Setup Software GUI

Please consult our sales team for the API and information about the implementation with the NLE systems. Specifications and designs subject to change without notice.

Manufacturer

MUSASHI



MUSASHI CO., LTD.

NK Fuji Bldg., 3/F., 3-21-1, Shimo-Ochiai,
Shinjuku-ku, Tokyo, 161-0033, Japan

Tel : +81-3-5996-7455 Fax : +81-3-5996-7484

http : //www.musashi-kk.co.jp

email : info@musashi-kk.co.jp

Dealer